

# BRONZE SERIES GARAGE DOORS



## PAINT GRADE WOOD GARAGE DOORS NATURAL BEAUTY WITH OLD-WORLD CRAFTSMANSHIP

Sawmill Creek Bronze Series customers appreciate the finer things in life...at a cost that's easy to live with. There's no reason to sacrifice good looks because of budget. Simply select the style that best fits the architecture of your home. Match or complement window patterns, or other exterior features to complete your look.

Sawmill Creek Bronze Series garage doors offer quality products at affordable prices. Our Bronze Series offer an extremely broad selection of options with all the same pre-priced designs as our Gold and Silver Series product lines.



## GARAGE DOOR SPECIFICATIONS

Exterior grade solid core plywood face material.

Available in 4" or 6" V-Groove or flat paintable surface.

Layered, solid wood perimeter trim boards 7/8" thick; 5 1/2" bottom rail; and 5 1/2" outer perimeter trim boards.

Internal frame is 1" pine with 1/8" hardboard front and back.

1" polystyrene insulation placed between front and back panel.

## DOOR SIZES

Standard door sizes are: 6', 8', 9', 10', 16' or 18' wide by 6' 6", 7', 7' 6", 8', 8' 6" and 9' high.

## WINDOW DETAIL

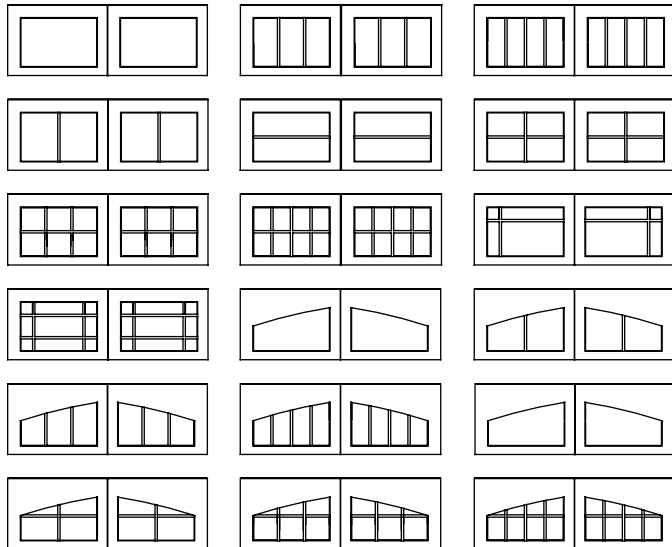
The available glass options are 1/8" clear double strength glass and 1/2" thick insulated glass:

- The 1/8" clear double strength glass is a single pane of glass. Double strength refers to the tensile strength of the glass. It is not safety glass and is not a replacement for tempered glass. It can be cut by most hardware stores and any glass company if a replacement is needed.
- Insulated glass is 2 panes of 1/8" clear double strength glass that uses a 1/4" aluminum spacer between the 2 lites. Adhesive sealant is used to hold the pieces together.

Window grids or muntins are made from solid wood. They can be painted to match the rest of the door. Window grids are 1" wide x 1/2" thick. The window grids are not attached to the glass so if the glass is broken only the glass needs to be replaced not the window grids. The grids are half-lapped joints at intersecting grids. The grid pattern is available in a variety of options.

Exterior muntins are square design.

### Window Design Options

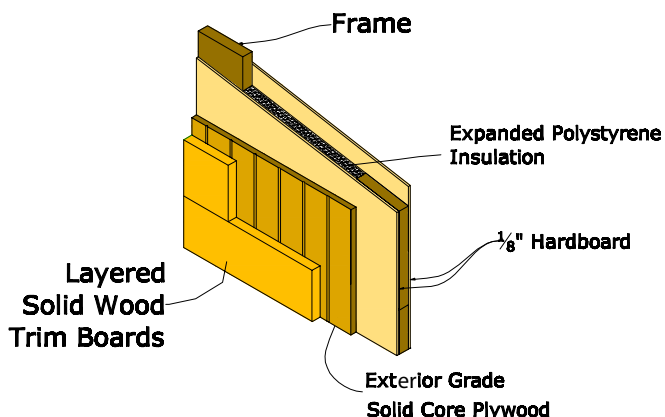


## FINISHING

The garage doors come with a Alkyd primer coat as standard. As an option, to preserve the natural beauty of our garage doors, Sawmill Creek offers factory applied painting. We will professionally apply one or two 2 coats of paint depending on your needs.

We use Sherwin Williams® paints.

## DOOR CONSTRUCTION



## BRONZE SERIES GARAGE DOOR OPTIONS

**Factory Applied Finish:** To assure the proper finishing of your garage doors and preserve the natural beauty of your garage doors, Sawmill Creek offers factory applied finishing.

**Decorative Hardware:** You can add character to the exterior of your garage doors with Sawmill Creek's authentic looking decorative hardware.

**Wind-load garage doors:** Sawmill Creek garage doors meet many wind-load standards. Check your local building codes for design pressure requirements.

## 1 YEAR LIMITED WARRANTY

Sawmill Creek offers a 1 Year Limited Warranty for the Bronze Series garage doors. Ask your local dealer for details or go to "SawmillCreekDoors.com".

Distributed By: