

# SILVER SERIES GARAGE DOORS



## HIGH QUALITY WOOD GARAGE DOORS AT A COMPETITIVE PRICE

Inspired by custom-made wood carriage doors of a by-gone era, Sawmill Creek builds garage doors that not only complement, but enhance the beauty of any home. Every door is handcrafted, joining old-world craftsmanship with modern roll-up technology. The exquisite classic wood construction is combined with the convenience of today's technology to present a timeless garage door that appears to swing, fold or slide open when in reality it glides at the touch of a button.

The Sawmill Creek Silver Series offers a high quality product at a very competitive price. The Silver Series has an extremely broad selection of products with the same pre-priced designs as the Gold Series line.



## GARAGE DOOR SPECIFICATIONS

Western Red Cedar standard face material. Available in 4" or 6" V-Groove, 4" Bead-Board, 4" Flush Face or flat paintable surface.

Layered Western Red Cedar perimeter trim boards 5/8" thick; 5 1/4" bottom rail; and 5 3/8" outer perimeter trim boards.

Internal frame is 1" pine with 1/8" hardboard front and back.

1" polystyrene insulation placed between front and back panel.

Moisture control design features built into the garage doors to prevent moisture damage.

Bottom astragal is EPDM rubber mounted in an extruded aluminum retainer.

Clear grade Western Red Cedar door stops are provided with a choice of white, gray, tan or brown vinyl colors.

## DOOR SIZES

Standard door sizes are: 6', 8', 9', 10', 16' or 18' wide by 6' 6", 7', 7' 6", 8', 8' 6" and 9' high.

Optional Sizeable Silver Series Doors: Doors will be built to the size indicated on the customer drawing. Doors are sizeable and built in 1" increments within the below widths and heights.

Widths: 4' to 18' 6"

Heights: 6' 6" to 10' 6"

## WOOD SPECIES

All standard exterior face material is Western Red Cedar.

Western Red Cedar generally has a mixture of light and dark grains, which is the true natural and beautiful look of Western Red Cedar. The natural characteristics of cedar make it a preferred material for exterior applications. Western Red Cedar contains natural oils that act as preservatives to help the wood resist insect attack and decay. Properly finished and maintained, Western Red Cedar will stand up to the elements for many years.

Also available is "Stain Grade Select", which offers consistency in color tones.

## WINDOW DETAIL

The available glass options are 1/8" clear double strength glass and 1/2" thick insulated glass:

- The 1/8" clear double strength glass is a single pane of glass. Double strength refers to the tensile strength of the glass. It is not safety glass and is not a replacement for tempered glass. It can be cut by most hardware stores and any glass company if a replacement is needed.
- Insulated glass is 2 panes of 1/8" clear double strength glass that uses a 1/4" aluminum spacer between the 2 lites. Adhesive sealant is used to hold the pieces together.
- Optional 1/8" Glacier Glass available. Glacier Glass is a single pane of glass with an antique appearance created by bubbling during the cooling process.

Window grids or muntins are made from Western Red Cedar. They can be stained or painted to match the rest of the door. Window grids are 1" wide x 1/2" thick. The window grids are not attached to the glass so if the glass is broken only the glass needs to be replaced not the window grids.

Standard exterior muntins are square design, optional exterior profile muntins and interior muntins are available.

## FINISHING

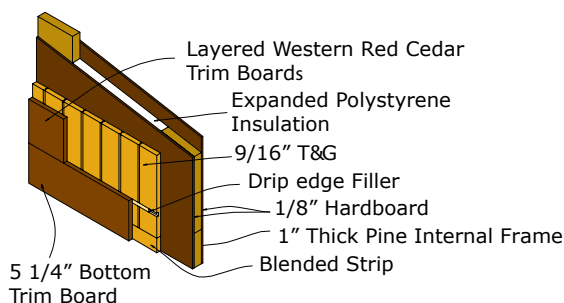
The garage doors come unfinished. As an option, to preserve the natural beauty of our garage doors, Sawmill Creek offers factory applied staining and painting. We will professionally apply 1, 2 or 3 coats depending on your needs.

We use either Sikkens® brand stains or Sherwin Williams® paints.

## DOOR CONSTRUCTION

Moisture is the number one element that can destroy any wood product. We incorporate several details into the construction of our Silver Series doors to prevent moisture damage.

The door has been designed with no exposed end grain on the bottom of the door. A drip edge causes the water to run off the door rather than into the door.



## SILVER SERIES GARAGE DOOR OPTIONS

Factory Applied Finish: To assure the proper finishing of your garage doors and preserve the natural beauty of your garage doors, Sawmill Creek offers factory applied finishing.

Stain Grade Select: Stain Grade Select allows you the option of getting your Western Red Cedar garage doors with consistency in color tone.

Decorative Hardware: You can add character to the exterior of your garage doors with Sawmill Creek's authentic looking decorative hardware.

Wind-load garage doors: Sawmill Creek garage doors meet many wind-load standards. Check your local building codes for design pressure requirements.

2 Week Quick Ship program: The basics of this program allow you to order garage doors requesting a two week lead time.

## 2 YEAR LIMITED WARRANTY

Sawmill Creek offers a 2 Year Limited Warranty for the Silver Series garage doors. Ask your local dealer for details or go to "Sawmillcreekdoors.com".

Distributed By: